





CONTENTS

WHO ARE MARLIN WINDOWS?	4
HOME OF HERITAGE ALUMINIUM	5
OUR SHOWROOM	6
THE MARLIN EXTERNAL HERITAGE COLLECTION	9
THE MARLIN INTERNAL HERITAGE COLLECTION	15
CASE STUDIES	
SPECTACULAR NEW BUILD	20
RIFFA MANOR	22
KINGLSEY HOUSE	24
WHIRLOWDALE ROAD	26
COLOURS & GLAZING	28



WHO ARE MARLIN WINDOWS?

Established in 2003, Marlin Windows is a family run business specialising in the manufacture of high quality aluminium windows and aluminium doors for domestic applications.

Operating from a modern and highly equipped engineering facility located in Keighley, West Yorkshire our versatile product range and innovations have placed us at the forefront of design solutions for a wide range of challenging glazing projects.

TOTAL CLIENT SATISFACTION

We have a special interest in slim, thermally efficient aluminium window and aluminium door systems and continually push the design and manufacturing boundaries to achieve maximum glass areas and narrow sight lines whenever possible.

Our belief that total client satisfaction is built on the successful hassle free completion of a project has earned us an enviable reputation as a committed and trustworthy glazing solution provider who places the client first, every time.



Marlin team photo, 2020



Trudy & Adrian Martin— Founders of Marlin Windows

HOME OF HERITAGE ALUMINIUM

QUALITY

Our goal is to get it right first time, every time and strive to exceed client expectations whenever possible.



TOTAL QUALITY MANAGEMENT

In order to achieve our high quality objectives and to ensure that our products completely satisfy our clients' needs we have developed a dedicated quality management system that is totally focused on preventing defects at every stage of production.



DESIGN

Marlin offers a complete design and support service with an honest and transparent approach to what can realistically be achieved with modern aluminium glazing systems. In addition to thermal, structural and wind calculations our technical team can also produce detailed CAD drawings and build 3D CAD models to help visualise a completed project.



VISIT US AT OUR SHOWROOM

For inspiration, help and advice visit our perfectly formed showroom in Keighley, West Yorkshire

Our showroom products are demonstrated by Marlin technical advisors who have considerable experience in the aluminium glazing industry. They fully understand system specifications and available options including any design limitations or restrictions that apply to each product range.

Our showroom doors are displayed to indicate how to achieve a low or flush threshold and we are on hand to give building construction advice on how to achieve this for your project.

This includes input on structural steel work, how to safeguard against cold bridging, damp protection measures and correct methods of frame fixing.

For showroom opening hours, visit www.marlinwindows.co.uk



Dedicated meeting space to discuss all of your aluminium glazing requirements



Our Heritage French doors featured on George Clarke's Old House, New Home, 2018

THE MARLIN EXTERNAL HERITAGE COLLECTION

Hinged door features

- Typical sight line of 59mm
- Maximum door height of 2100mm
- Maximum door width of 900mm (per panel)
- U-Value of 1.6 W/m²K using a 1.0 W/m²K centre pane
 - Multipoint locking
 - Avocet ABS cylinder
- Traditional handles available

Casement window features

- Opening window sight line of 59mm
- Fixed window sight line of 33mm
- Maximum side hung height of 1400mm
- Maximum side hung width of 700mm
- Maximum top hung height of 1300mm
- Maximum top hung width of 1300mm
- U-Value of 1.6 W/m²K using a 1.0 W/m²K centre pane
 - Traditional handles available

Tilt and turn features

- Opening window sight line of 76mm
- Fixed window sight line of 41mm
- Maximum height of 2100mm
- Maximum width of 1200mm
- U-Value of 1.6 W/m²K using a 1.0 W/m²K centre pane

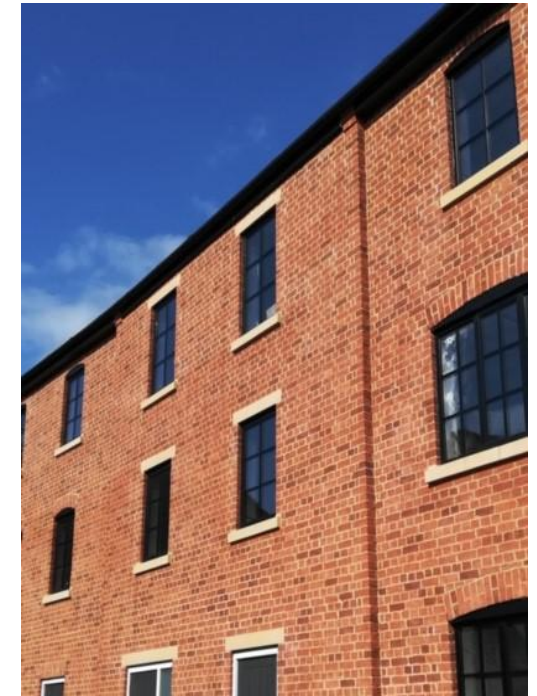
Bi-folding door features

- Typical sight line of 94mm
- Maximum height of 2200mm
- Maximum width of 1000mm (per panel)
- U-Value of 1.5 W/m²K using a 1.0 W/m²K centre pane
 - Multipoint locking
 - Avocet ABS cylinder
- Solid transom detail to give individual panes of glass—no astragal bars in sight!

SUITABLE FOR BOTH MODERN AND TRADITIONAL APPLICATIONS

Our Heritage systems have been designed to offer a solution for both period properties and contemporary projects.

Replicate the appearance of traditional steel doors from a bygone era with classic glazing bars and panel designs to create a vintage look that's both cost effective and thermally efficient!









"I'd wholeheartedly recommend Marlin Windows. We ordered Aluminium Steel replacement type French Patio doors and Windows. They are absolutely beautiful. And they were an absolute pleasure to deal with. Thanks Marlin!"



THE MARLIN INTERNAL HERITAGE COLLECTION

Create light filled private spaces with our internal Heritage collection.

A versatile system providing the opportunity to create or partition living or home office working spaces whilst ensuring high levels of natural light can flood between rooms.

Divide internal areas of any size or shape with elegant steel-look framework and authentic single pane glass apertures or use double glazing for an affective acoustic barrier.

KEY FEATURES

- Bespoke – made to measure, custom fit
 - Extensive design and layout options
 - Classic slim steel-look sight lines
 - Fixed screens with or without doors
 - Allows for a run through floor finish
- Single pane glass or acoustic double glazed
- Exceptional quality with low maintenance



- Hinged doors
- Pivot doors
- Sliding doors

Hinged door features

- Maximum width of 900mm (per panel)
 - Maximum height of 2200mm
 - Minimum width of 400mm
 - Traditional handles available



"We used Marlin for windows and internal industrial style doors and screens on our recent self build project. Marlin are not local to us but provided an excellent service from quotation, advice, redesigns and with very detailed comms throughout. The windows and doors are the talking point of our entire build. Adrian from Marlin said that windows become the eyes of the house and I didn't forget that - our eyes are simply stunning. Would highly recommend."



Pivot door features

- Maximum width of 2000mm (per panel)
 - Maximum height of 2500mm
 - Minimum width of 400mm
 - Maximum weight of 100kg
 - Traditional handles available

Sliding door features

- Maximum width of 1200mm (per panel)
 - Maximum height of 2500mm
 - Minimum width of 400mm
 - Maximum weight of 100kg
 - Traditional handles available



MARLIN CASE STUDIES





SPECTACULAR NEW BUILD, ILKLEY

THE PROPERTY:

A stunning contemporary new build private residence in Ilkley, West Yorkshire.

THE REQUIREMENT:

To provide slim thermally efficient aluminium windows to the front and side elevations that would not detract from the smooth fine lines of new sawn stone work.

THE SOLUTION:

The Heritage system is the ideal window solution to keep frame sight lines to a minimum and to blend perfectly with the new external stone work.





RIFFA MANOR, NORTH YORKSHIRE

THE PROPERTY:

A spectacular private residence in Huby, North Yorkshire.

THE REQUIREMENT:

Replacement windows with excellent thermal performance were required throughout the property to authentically replicate the appearance of the existing original single pane steel frames.

Protection for delicate interior furnishings and carpets which had been suffering from the effects of direct sunlight also needed to be considered as part of the glass specification.

THE SOLUTION:

Our slim, thermally broken Heritage windows were proposed to all locations and accepted by the client as the perfect solution to closely replicate the original glazing and dramatically reduce heat loss.

We specified sealed units using Sunguard 70/35 on the external pane to provide solar protection for the delicate interior furnishings.



KINGSLEY HOUSE, STAMFORD

THE PROPERTY:

Kingsley House, formally known as the Old Rectory is a grade 2 listed property that was built in the 14th century.

THE REQUIREMENT

A large thermally efficient glazed screen was required to a new extension at the rear of the property. To comply with planning, conservation and building regulations requirements the frame work had to be a close replica of a period metal glazing system that used very slim frame work whilst still complying to modern energy efficiency standards. Easy access to the patio and garden area through two sets of traditional double doors was also an important design detail in order to create functional balance. Internally, the doors to all ground floor rooms had to mirror the appearance of the large screen and continue the theme of slim frame work with maximum glass throughout.

THE SOLUTION:

We proposed our aluminium Heritage glazing system and after consultation this was successfully accepted by the client as the best overall solution for all locations.



MILLHOUSES, SHEFFIELD

THE PROPERTY:

A large detached period house in the neighbourhood of Millhouses, Sheffield.

THE REQUIREMENT:

The existing structure was subject to a large-scale extension and refurbishment program. Thermally efficient aluminium windows and doors with narrow frames were required throughout with a particular consideration for design symmetry and profile colour to suit the character of the property.

An extremely important detail on the rear elevation was ensuring that door thresholds were kept to a minimum height for easy access onto the large terrace area and that horizontal glazing bars aligned through into fixed screens in the same plane.

THE SOLUTION:

Our thermally efficient and secure aluminium Heritage window and door system was proposed for all locations to achieve a traditional slender appearance with narrow sight lines. Door threshold heights were perfectly controlled using system frame exten-



COLOUR

POWDER COATING

All of our aluminium products are polyester powder coated to Qualicoat standards by our glazing systems supplier allowing us to provide a 25 year paint guarantee.

We can offer the extensive range of RAL colours and two stunning ranges of textured paint finishes, Alchemy details and dual colour in any combination.

For a perfect finish, colour coordinated handles and hinges are also possible to ensure a seamless blend between frame profiles and accessories.

To view our full range of colours, please don't hesitate to book an appointment to visit our showroom.

Alternatively, we can post free colour samples that will be powder coated onto aluminium plates.



EXTENSIVE RANGE OF RAL COLOURS TO CHOOSE FROM

Choosing your Paint Colour

Choosing the right colour for your project is vital to ensure the finish and longevity of your project. This is why we offer a range of colour options to suit your needs. Our extensive range of colours is available in a variety of finishes, textures and textures. There is no substitute for seeing a sample of the finish you are looking for. Our colour matching service is available to help you choose the right colour for your project.

Sensations

The Sensations colour range offers excellent design qualities. An extensive range of metallic finishes that combine with a range of textures to create a unique and sophisticated appearance. Ideal for both residential and commercial projects. Sensations offers a range of colours and finishes that offer a unique touch to your project.

Cotswold

The perfect colour palette for traditional projects and conservation areas. The classic Cotswold and warm tones of our Cotswold range have been selected to provide the perfect look for both residential and heritage projects alike.

Naturals

Inspiring colours and finishes for contemporary architecture and restoration projects. These beautiful natural wood finishes, in a variety of finishes, textures and textures, offer a unique and sophisticated look for your project.

Alchemy

Alchemy combines the best of anodised and powder coated finishes. Offering an extensive range of finishes that combine the unique look and texture of anodising with the protective qualities of a high quality powder coated finish.

- Inspiring ranges of colours
- Durable scratch resistant coatings
- Highly resistant to corrosion
- Choice of textured or non-textured ranges

- Creative: replicates the appearance of anodised finishes
- Protective: durable, corrosion resistant powder coated finishes
- Versatile: powder coating makes colour matching easy

GLAZING

INSULATED GLASS UNITS



Planitherm[®]
Glass that makes a difference

We are members of the Planitherm installer network and only use Saint-Gobain Planitherm glass in our sealed units

This high performance glass product is specially manufactured by Saint-Gobain Glass (SGG) for the UK marketplace and is the best selling high performance low emissivity (low E) glass in Europe. The Planitherm range can be combined with many other Saint-Gobain Glass products to provide a multitude of high performance, multifunctional glazing options including solar control, safety and security.



LEAD WORK

If you require lead work details to sealed units we are able to recreate existing designs using traditional materials and techniques including antique aged lead work with soldered joints.









VISIT OUR SHOWROOM OR GET IN TOUCH FOR A QUOTATION

01535 603 909

sales@marlinwindows.co.uk

Unit 2 Chapel Works, 1 Fruit Street, Keighley, BD21 4LE

www.marlinwindows.co.uk

Visit our showroom by appointment during the following hours:

9.00am to 5.00pm Monday to Thursday

9.00am to 4.00pm Fridays

9.00am to 12.00pm Saturdays

MADE IN BRITAIN The logo consists of a red square with a white stylized 'B' shape inside, with the words "MADE IN BRITAIN" written in small white capital letters below the square.

