









# CONTENTS

WHO ARE MARLIN WINDOWS?	4
HOME OF HERITAGE ALUMINIUM	5
OUR SHOWROOM	6
THE MARLIN EXTERNAL HERITAGE COLLECTION	9
THE MARLIN INTERNAL HERITAGE COLLECTION	15
MARLIN CONTEMPORARY WINDOW COLLECTION	18
MARLIN BIFOLDING DOORS	20
MARLIN SLIDING DOORS	22
RESIDENTIAL DOORS	24
<u>CASE STUDIES</u>	
KINGLSEY HOUSE	28
MILLHOUSES SHEFFIELD	30
WHIRLOWDALE ROAD	26
GRAND DESIGNS CONTEMPORARY WINDOWS	32
ILKLEY CONTEMPORARY SLIDING DOORS	34
WHEELCHAIR ACCESSIBLE BIFOLD DOORS	36
COLOURS & GLAZING	28
GLAZING	29

# WHO ARE MARLIN WINDOWS?

Established in 2003, Marlin Windows is a family run business specialising in the manufacture of high quality aluminium windows and aluminium doors for domestic applications.

Operating from a modern and highly equipped engineering facility located in Keighley, West Yorkshire our versatile product range and innovations have placed us at the forefront of design solutions for a wide range of challenging glazing projects.

## TOTAL CLIENT SATISFACTION

We have a special interest in slim, thermally efficient aluminium window and aluminium door systems and continually push the design and manufacturing boundaries to achieve maximum glass areas and narrow sight lines whenever possible.

Our belief that total client satisfaction is built on the successful hassle free completion of a project has earned us an enviable reputation as a committed and trustworthy glazing solution provider who places the client first, every time.



Marlin team photo, 2025



Trudy & Adrian Martin— Founders of Marlin Windows



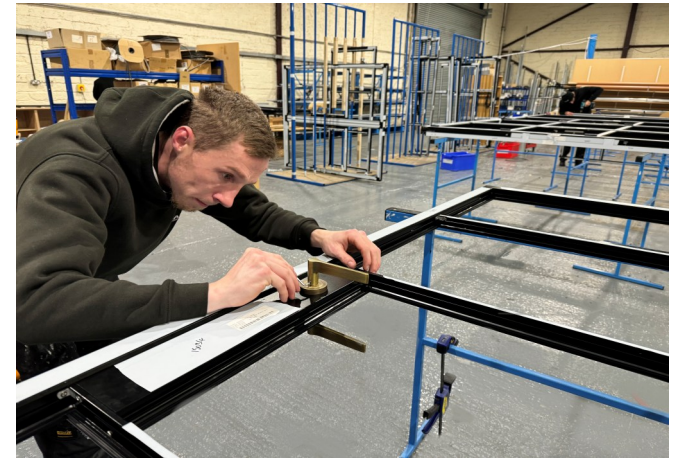
# HOME OF ALUMINIUM GLAZING

## QUALITY

Our goal is to get it right first time, every time  
and strive to exceed client expectations  
whenever possible.

## TOTAL QUALITY MANAGEMENT

In order to achieve our high quality objectives  
and to ensure that our products completely sat-  
isfy our clients' needs we have developed a  
dedicated quality management system that is  
totally focused on preventing defects at every  
stage of production.



## DESIGN

Marlin offers a complete design and support service with an honest and transparent approach to what can realistically be achieved with modern aluminium glazing systems. In addition to thermal, structural and wind calculations our technical team can also produce detailed CAD drawings and build 3D CAD models to help visualise a completed project.







# VISIT US AT OUR SHOWROOM

For inspiration, help and advice visit our perfectly formed showroom in Keighley, West Yorkshire

Our showroom products are demonstrated by Marlin technical advisors who have considerable experience in the aluminium glazing industry. They fully understand system specifications and available options including any design limitations or restrictions that apply to each product range.

Our showroom doors are displayed to indicate how to achieve a low or flush threshold and we are on hand to give building construction advice on how to achieve this for your project.

This includes input on structural steel work, how to safeguard against cold bridging, damp protection measures and correct methods of frame fixing.



*Dedicated meeting space to discuss all of your aluminium glazing requirements*

For showroom opening hours, visit [www.marlinwindows.co.uk](http://www.marlinwindows.co.uk)





*Our Heritage French doors featured on George Clarke's Old House, New Home, 2018*



# THE MARLIN EXTERNAL HERITAGE COLLECTION

## Hinged door features

- Typical sight line of 59mm
- Maximum door height of 2100mm
- Maximum door width of 900mm (per panel)
- U-Value of 1.4 W/m<sup>2</sup>K using a 0.9 W/m<sup>2</sup>K centre pane
  - Multipoint locking
  - Avocet ABS cylinder
- Traditional handles available

## Casement window features

- Opening window sight line of 59mm
- Fixed window sight line of 33mm
- Maximum side hung height of 1400mm
- Maximum side hung width of 700mm
- Maximum top hung height of 1300mm
- Maximum top hung width of 1300mm
- U-Value of 1.4 W/m<sup>2</sup>K using a 0.9 W/m<sup>2</sup>K centre pane
  - Traditional handles available

## Tilt and turn features

- Opening window sight line of 76mm
- Fixed window sight line of 41mm
- Maximum height of 2100mm
- Maximum width of 1200mm
- U-Value of 1.4 W/m<sup>2</sup>K using a 0.9 W/m<sup>2</sup>K centre pane

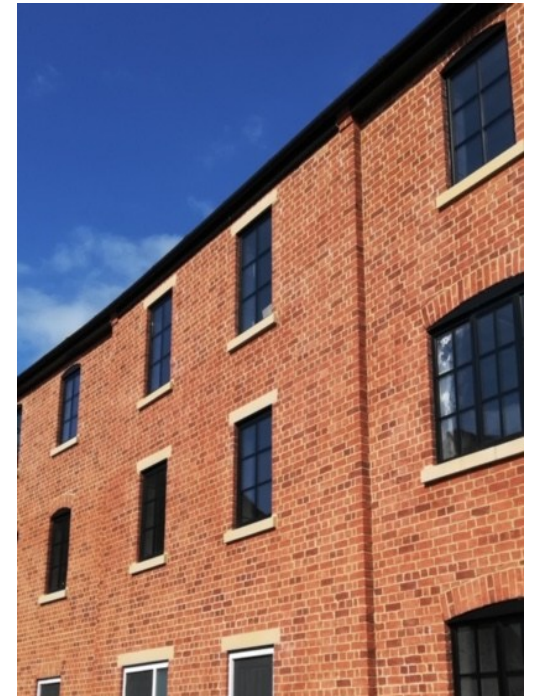
## Bi-folding door features

- Typical sight line of 94mm
- Maximum height of 2200mm
- Maximum width of 1000mm (per panel)
- U-Value of 1.4 W/m<sup>2</sup>K using a 0.9 W/m<sup>2</sup>K centre pane
  - Multipoint locking
  - Avocet ABS cylinder
- Solid transom detail to give individual panes of glass—no astragal bars in sight!

# SUITABLE FOR BOTH MODERN AND TRADITIONAL APPLICATIONS

Our Heritage systems have been designed to offer a solution for both period properties and contemporary projects.

Replicate the appearance of traditional steel doors from a bygone era with classic glazing bars and panel designs to create a vintage look that's both cost effective and thermally efficient!















*"I'd wholeheartedly recommend Marlin Windows. We ordered Aluminium Steel replacement type French Patio doors and Windows. They are absolutely beautiful. And they were an absolute pleasure to deal with. Thanks Marlin!"*







# THE MARLIN INTERNAL HERITAGE COLLECTION

Create light filled private spaces with our internal Heritage collection.

A versatile system providing the opportunity to create or partition living or home office working spaces whilst ensuring high levels of natural light can flood between rooms.

Divide internal areas of any size or shape with elegant steel-look framework and authentic single pane glass apertures or use double glazing for an affective acoustic barrier.

## KEY FEATURES

- Bespoke – made to measure, custom fit
  - Extensive design and layout options
    - Classic slim steel-look sight lines
    - Fixed screens with or without doors
    - Allows for a run through floor finish
- Single pane glass or acoustic double glazed
- Exceptional quality with low maintenance





- Hinged doors
- Pivot doors
- Sliding doors

- Hinged door features
- Maximum width of 900mm (per panel)
  - Maximum height of 2200mm
  - Minimum width of 400mm
  - Traditional handles available



*"We used Marlin for windows and internal industrial style doors and screens on our recent self build project. Marlin are not local to us but provided an excellent service from quotation, advice, redesigns and with very detailed comms throughout. The windows and doors are the talking point of our entire build. Adrian from Marlin said that windows become the eyes of the house and I didn't forget that - our eyes are simply stunning. Would highly recommend."*





#### Pivot door features

- Maximum width of 2000mm (per panel)
  - Maximum height of 2500mm
  - Minimum width of 400mm
  - Maximum weight of 100kg
  - Traditional handles available

#### Sliding door features

- Maximum width of 1200mm (per panel)
  - Maximum height of 2500mm
  - Minimum width of 400mm
  - Maximum weight of 100kg
  - Traditional handles available





# MARLIN CONTEMPORARY WINDOWS

From eco friendly, suitable for SIPS (Structured Insulated Panel) houses to expansive glass feature windows.

## EcoFutural

Smart technology significantly reduces the thermal transmittance increasing the overall U Value. Choose Eco-Futural where enhanced thermal performance is required. Suitable for SIPS (Structured Insulated Panel) houses.

## Alitherm 400

The Alitherm 400 aluminium glazing system offers a cost effective thermally compliant window solution. Suitable for residential applications, a matching door is also available

## Prestige Windows

Our most thermally efficient and versatile 72 – 80mm wide system, is available in casement, French, tilt & turn and fixed window styles, and has been designed to be sympathetic to the modern trend for light, airy interiors.

## KEY FEATURES

- Bespoke – made to measure, custom fit
- Extensive design and layout options
  - Classic slim sight lines
- Exceptional Thermal Performance
  - Part L compliant
- Exceptional quality with low maintenance







# MARLIN BIFOLDING DOORS

Quality Bi-Fold Doors Made To Measure

Aluminium Bi-fold doors are the preferred option to transform a living space.

Choose and change the size and feel of your rooms as you please with sliding bi-fold aluminium doors. Give yourself versatility and flexibility to 'open up' or

## Visofold 1000

Visofold 1000 Bi-fold doors slide folding doors offering slim sightlines that are ideally suited to residential applications. All profiles are extruded from 100% recycled aluminium billet and feature extended, chambered polyamide thermal breaks allowing Alitherm to achieve excellent thermal performance.

## Visofold 6000

The Visofold 6000 slide and fold door offers extremely slim profiles which are perfectly suited to residential properties where narrow sight lines and maximum glass areas are required. Low threshold custom design option for unimpeded easy access tailored to your individual specification, which ensure the perfect finish at floor level or rebated thresholds that improve weather resistance.

## Prestige Bi-folding Doors

Our most thermally efficient and versatile 72 – 80mm wide system, is available in casement, French, tilt & turn and fixed window styles, and has been designed to be sympathetic to the modern trend for light, airy interiors.

1.4 U-value W/(m<sup>2</sup>K) Double glazed  
1.0 U-value W/(m<sup>2</sup>K) Triple glazed\*

## KEY FEATURES

- Bespoke – made to measure, custom fit
- Extensive design and layout options
  - Multiple Threshold Options
- Exceptional Thermal Performance
  - Part L compliant











# MARLIN SLIDING DOORS

## Smart Visoglide Plus

Visoglide Plus aluminium sliding patio doors offer contemporary styling and flexible opening options with excellent thermal and weather resistance properties.



## Prestige Lift & Slide Patio Doors

The perfect way to frame a view, Prestige Lift & Slide Patio Doors provide the ideal way to create a feeling of space within your home. Letting you enjoy the great outdoors, whatever the weather.



## KEY FEATURES

- Bespoke – made to measure, custom fit
  - Extensive design and layout options
    - Multiple Threshold Options
  - Exceptional Thermal Performance
    - Part L compliant
- Exceptional quality with low maintenance



# Residential Doors

Our handsome range of residential doors are manufactured to your individual requirements.

## Smart Designer Doors

Secure your home with the new 10 point locking Smart designer front door. Available in a huge range of styles, choose a front door design to complement your home.



## Alitherm 400 Doors

The Alitherm 400 aluminium glazing system offers a cost effective thermally compliant single or double door solution that can be used with any of our Designer Door panels





Manufactured entirely in the UK, this energy efficient and sustainable aluminium composite door has been created to deliver superior performance to alternative brands and the inherent weaknesses of other materials.

### Signature Doors

A stunning range of aluminium composite entrance doors designed to complement homes of every description.

This energy efficient and sustainable aluminium composite door has been created to deliver superior performance.





## MARLIN CASE STUDIES







# KINGSLEY HOUSE, STAMFORD

## THE PROPERTY:

Kingsley House, formally known as the Old Rectory is a grade 2 listed property that was built in the 14<sup>th</sup> century.

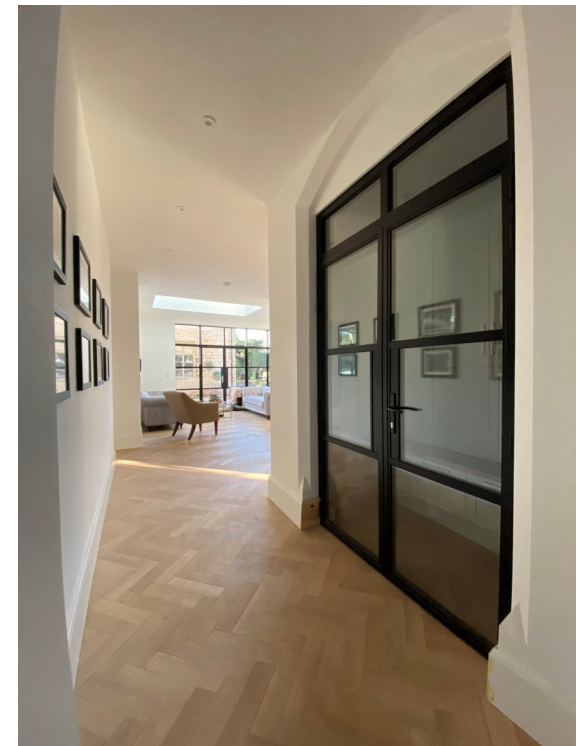
## THE REQUIREMENT

A large thermally efficient glazed screen was required to a new extension at the rear of the property. To comply with planning, conservation and building regulations requirements the frame work had to be a close replica of a period metal glazing system that used very slim frame work whilst still complying to modern energy efficiency standards. Easy access to the patio and garden area through two sets of traditional double doors was also an important design detail in order to create functional balance. Internally, the doors to all ground floor rooms had to mirror the appearance of the large screen and continue the theme of slim frame work with maximum glass throughout.

## THE SOLUTION:

We proposed our aluminium Heritage glazing system and after consultation this was successfully accepted by the client as the best overall solution for all locations.







# MILLHOUSES, SHEFFIELD

## THE PROPERTY:

A large detached period house in the neighbourhood of Millhouses, Sheffield.

## THE REQUIREMENT:

The existing structure was subject to a large-scale extension and refurbishment program. Thermally efficient aluminium windows and doors with narrow frames were required throughout with a particular consideration for design symmetry and profile colour to suit the character of the property.

An extremely important detail on the rear elevation was ensuring that door thresholds were kept to a minimum height for easy access onto the large terrace area and that horizontal glazing bars aligned through into fixed screens in the same plane.

## THE SOLUTION:

Our thermally efficient and secure aluminium Heritage window and door system was proposed for all locations to achieve a traditional slender appearance with narrow sight lines. Door threshold heights were perfectly controlled using system frame extensions to accommodate thick stone flags on the terrace and to create a perfect connection detail for internal floor finishes.







# Grand Designs South Lakeland Derelict Blacking Mill

## THE PROPERTY:

A large self-build residential project to convert two historic derelict mill buildings on the site of a former blacking mill into a house with 4 bedrooms, 4 bathrooms, workshop and office in South Lakeland.

The blacking mill, a Scheduled Ancient Monument, had been empty and deteriorating for 60 years requiring full restoration.

Featured on Grand Designs Channel 4



## THE REQUIREMENT:

To provide contemporary aluminium windows and doors with flat, square edged profiles in a dark grey paint finish. A very important detail was to ensure that the polyester powder coated frames were manufactured in a colour that was sympathetic to the facing materials of the mill building and site environment.

Due to the location on the narrow valley floor, particular focus had to be placed on maximising opportunities to enhance natural light entering the building and therefore design and layout was a vital consideration to ensure that frame work was kept to a minimum.





## THE SOLUTION:

[Marlin Windows](#) aluminium window and door systems were integrated into a new timber-framed house dropped inside the footprint of the existing mill building.

Thermally efficient and secure aluminium glazing products were painted in textured Vulcan Black to work in perfect harmony with the different external finishes.

The main feature windows were specified in Marlin's [EcoFutural system](#) allowing achievement of the maximum unobtrusive glass areas. This was complemented by [Alitherm 800 casement windows](#) being used elsewhere for natural ventilation and fire egress solutions.

[Visoglide Plus sliding doors](#) with slim interlocks were designed into the open plan living space to maximise access opportunities onto the patio and enhance views towards Newland Beck and beyond.

A wide [Smart Designer Door](#) with low threshold and matching side lights was provided as a statement main entrance way with Marlin's [Alitherm Plus door system](#) elsewhere for access to the workshop, utility and roof garden areas.



## THE REACTION:

“prudently sourced windows at a reasonable cost.”  
“nothing gets in the way of these views which are so strong that it’s almost like standing in a gallery... that vast window is panoramic like a super wide screen cinema screen... it almost completely fills my field of vision”

Kevin McCloud – Grand Designs Presenter – Channel 4



# Ilkley Contemporary Sliding Patio Doors

## THE PROPERTY:

A stunning extension to a contemporary property built in the grounds of Thorpe Hall, Ilkley, West Yorkshire.

## THE REACTION:

To provide smooth, easy to operate door access solutions with maximum glass areas and low thresholds leading onto a proposed decking area from a new extension to the rear of the property.

The objective from the start was to take full advantage of the beautiful views across the valley.

## THE SOLUTION:

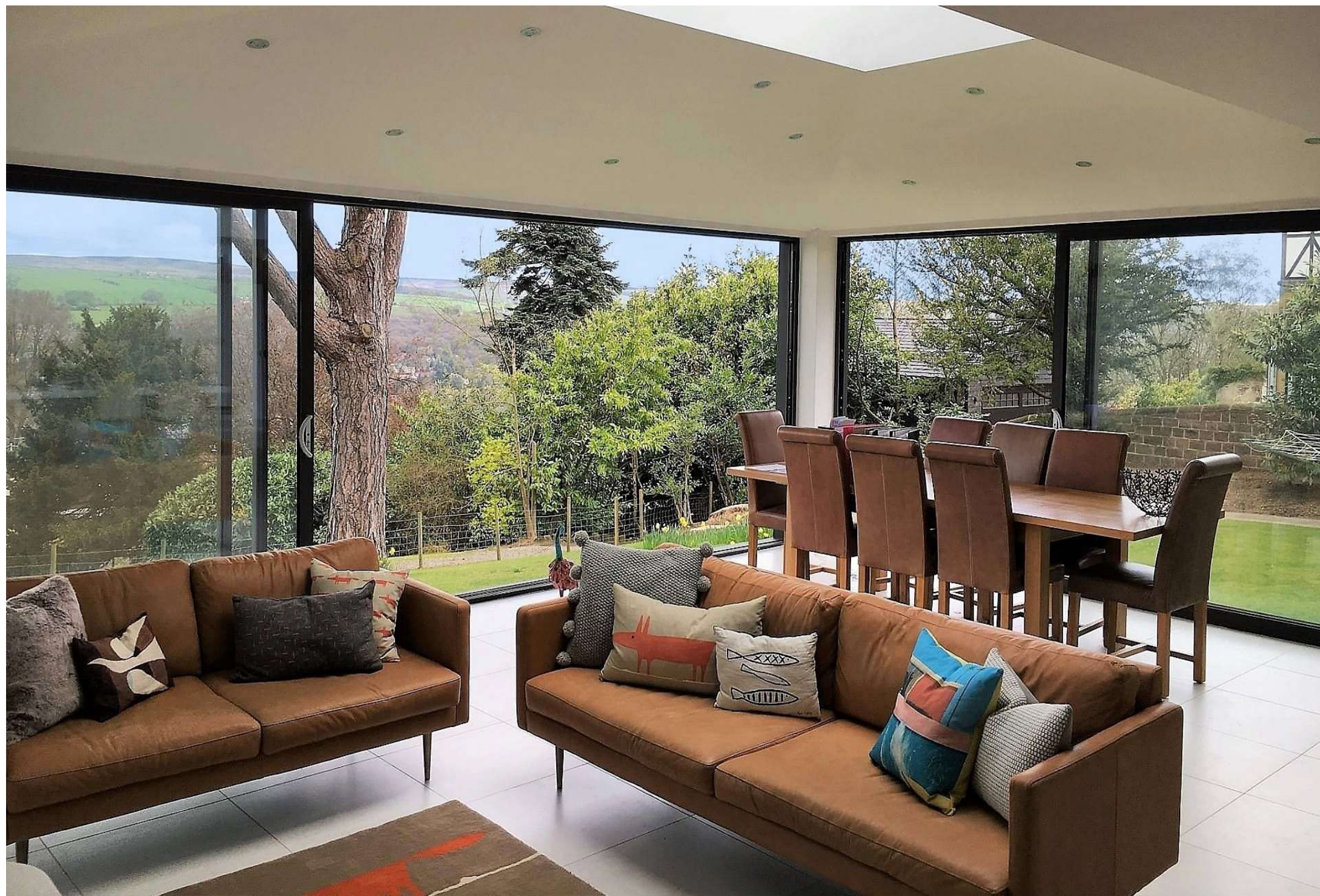
Marlin created a wonderfully large opening of maximum width at the front elevation by specifying the [Smart Visoglide Plus triple track sliding door system](#) which allows 2 panes to slide over the top of the 3rd. The Visoglide Plus double track sliding door system was installed on the right side elevation.

This sliding patio door system offers minimum frame sightlines and with a meeting stile of only 35mm wide ensuring the best unobstructed views across the Wharfe Valley and beyond.

A [Smart Wall feature window](#) completes the left side elevation creating stunning panoramic views.

Marlin sliding doors seamlessly connect the interior and exterior bringing natural light flooding into the space.











# Wheelchair Accessible – TV Featured

## THE PROPERTY:

A bungalow with shallow wide garden in Swindon, Wiltshire. Featured on [Love Your Home & Garden on ITV broadcast in January 2019](#).

Alan described homeowners Nina & Steve's home as a closed off box with inaccessible garden.

## THE REQUIREMENT:

The owners Nina & Steve are two wheelchair users with two young children.

“An improved layout to their living space as well as a safe garden to play in that the whole family could access would really help” says Alan.

All the picture windows looked out onto the road at the front, the garden at the back couldn't even be seen from a wheelchair and had no direct access. The garden was completely inaccessible to wheelchairs.

Alan explains “They haven't just got a garden they cannot get into, they've got a house which still doesn't quite work and it most certainly is not attached to the garden. This wall is brutal, it's stopping anybody coming out, the windows are so high it's even stopping them looking out. Well it's time this house connected with the garden and was just a happier place.”

## THE SOLUTION:

Architects George Bradley and Ewald Van Der Straeten planned to create an open plan space with an 'inside outside' kitchen peninsula that appears to shoot through the glazing flanked by a pair of [Visofold 1000 bi-fold doors](#) at either side offering a choice of inside or outside dining. The bi-fold doors provided the key link to the garden. Designed by Marlin Windows with [low threshold for easy wheelchair access](#).”



# COLOUR

## POWDER COATING

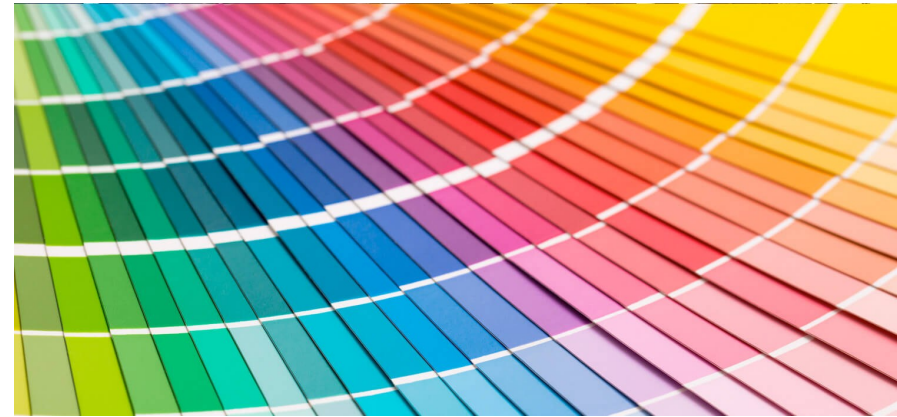
All of our aluminium products are polyester powder coated to Qualicoat standards by our glazing systems supplier allowing us to provide a 25 year paint guarantee.

We can offer the extensive range of RAL colours and two stunning ranges of textured paint finishes, Alchemy details and dual colour in any combination.

For a perfect finish, colour coordinated handles and hinges are also possible to ensure a seamless blend between frame profiles and accessories.

To view our full range of colours, please don't hesitate to book an appointment to visit our showroom.

Alternatively, we can post free colour samples that will be powder coated on-to aluminium plates.



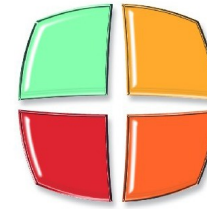
## EXTENSIVE RANGE OF RAL COLOURS TO CHOOSE FROM





# GLAZING

## INSULATED GLASS UNITS



**Planitherm<sup>®</sup>**  
Glass that makes a difference

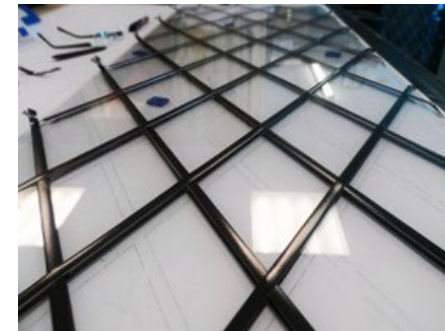
We are members of the Planitherm installer network and only use Saint-Gobain Planitherm glass in our sealed units

This high performance glass product is specially manufactured by Saint-Gobain Glass (SGG) for the UK marketplace and is the best selling high performance low emissivity (low E) glass in Europe. The Planitherm range can be combined with many other Saint-Gobain Glass products to provide a multitude of high performance, multifunctional glazing options including solar control, safety and security.



## LEAD WORK

If you require lead work details to sealed units we are able to recreate existing designs using traditional materials and techniques including antique aged lead work with soldered joints.















VISIT OUR SHOWROOM OR GET IN TOUCH FOR A QUOTATION

01535 603 909

[sales@marlinwindows.co.uk](mailto:sales@marlinwindows.co.uk)

Unit 2 Chapel Works, 1 Fruit Street, Keighley, BD21 4LE

[www.marlinwindows.co.uk](http://www.marlinwindows.co.uk)

Visit our showroom by appointment during the following  
hours:

9.00am to 5.00pm Monday to Thursday

9.00am to 4.00pm Fridays

9.00am to 12.00pm Saturdays

MADE IN BRITAIN

